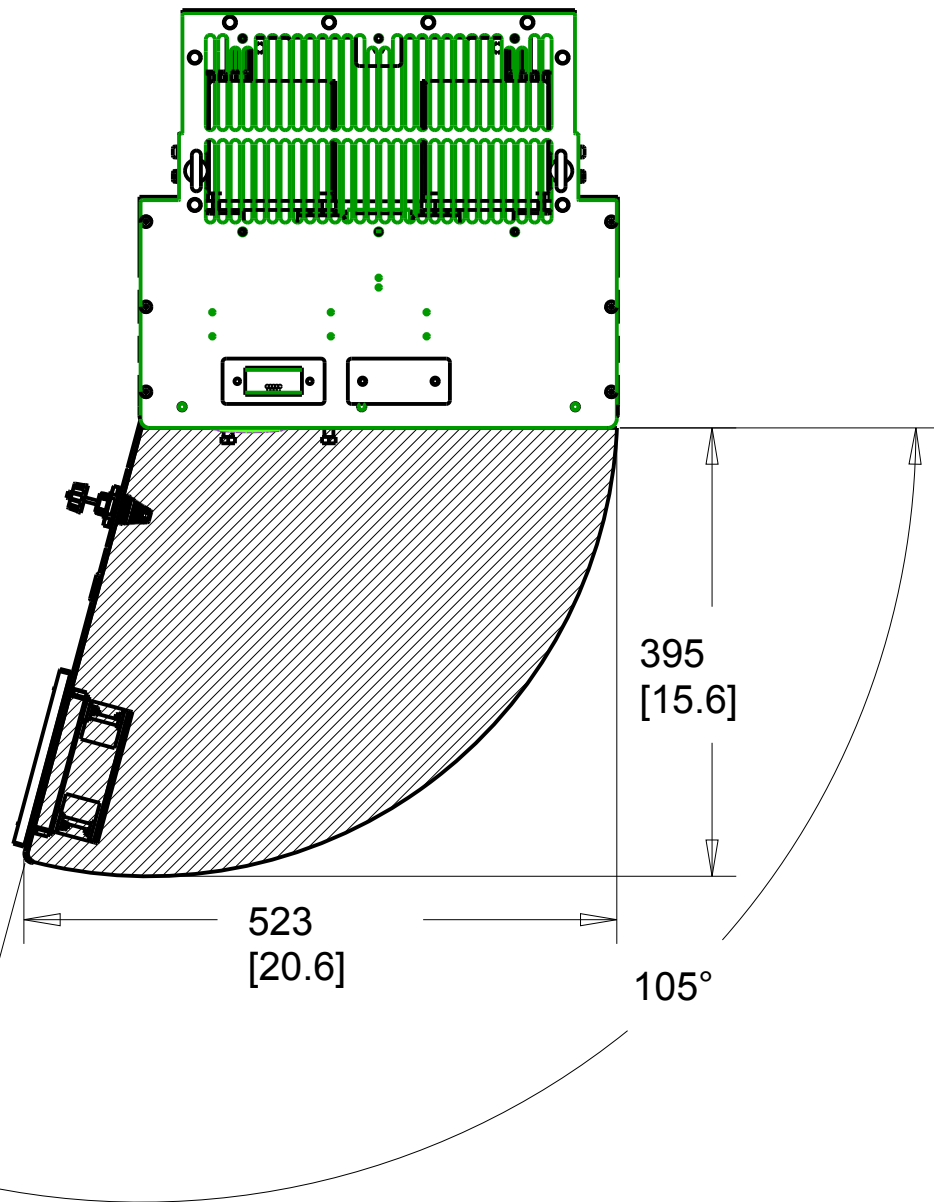
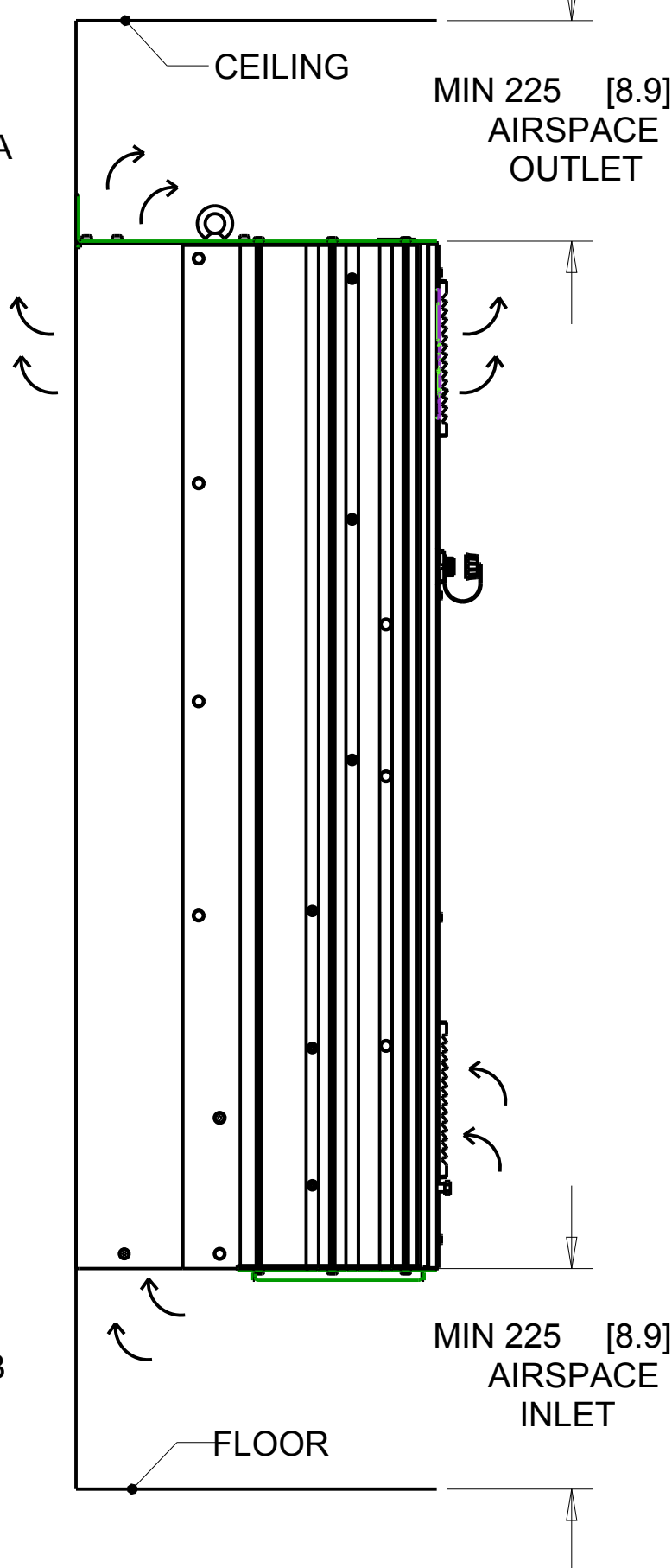
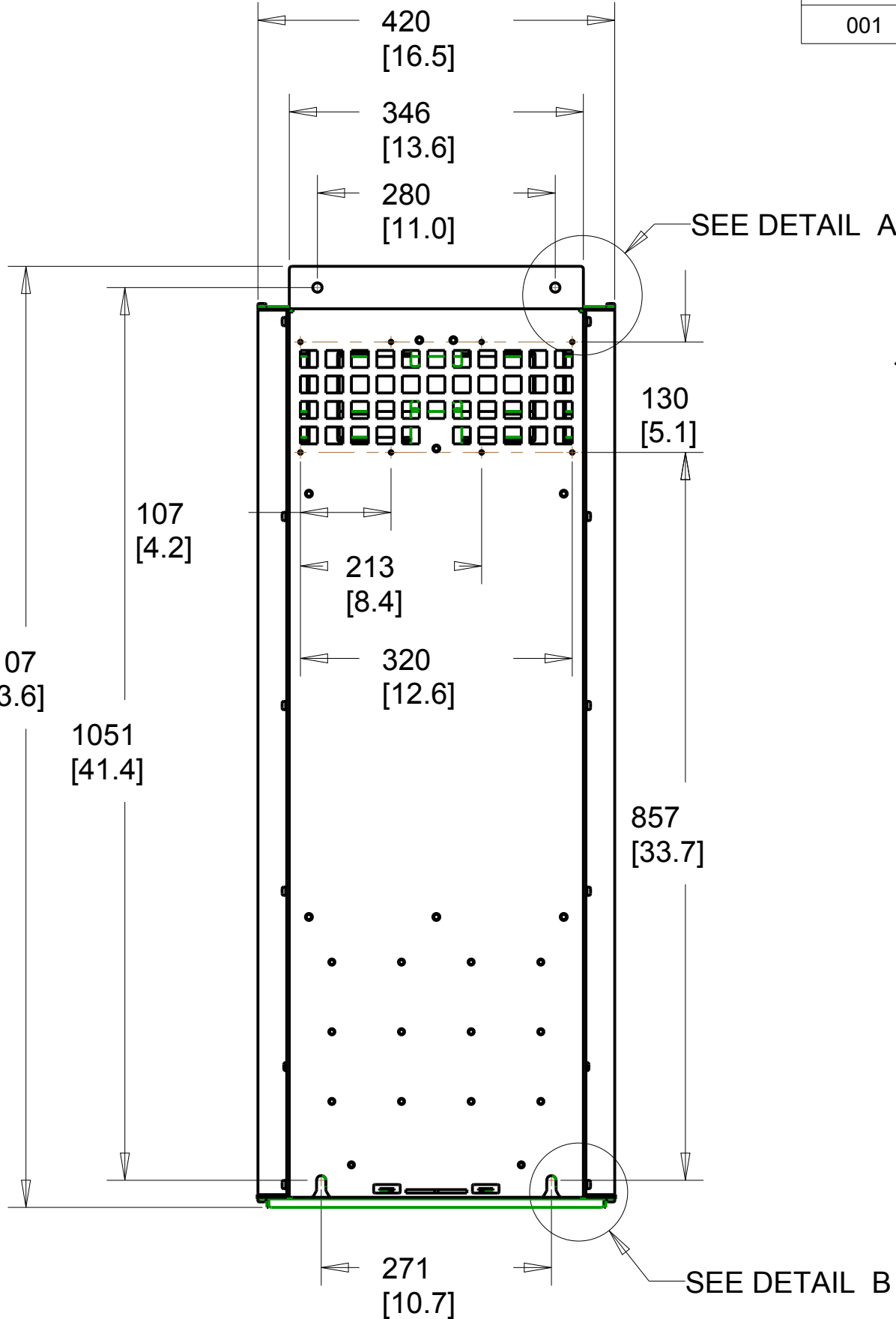
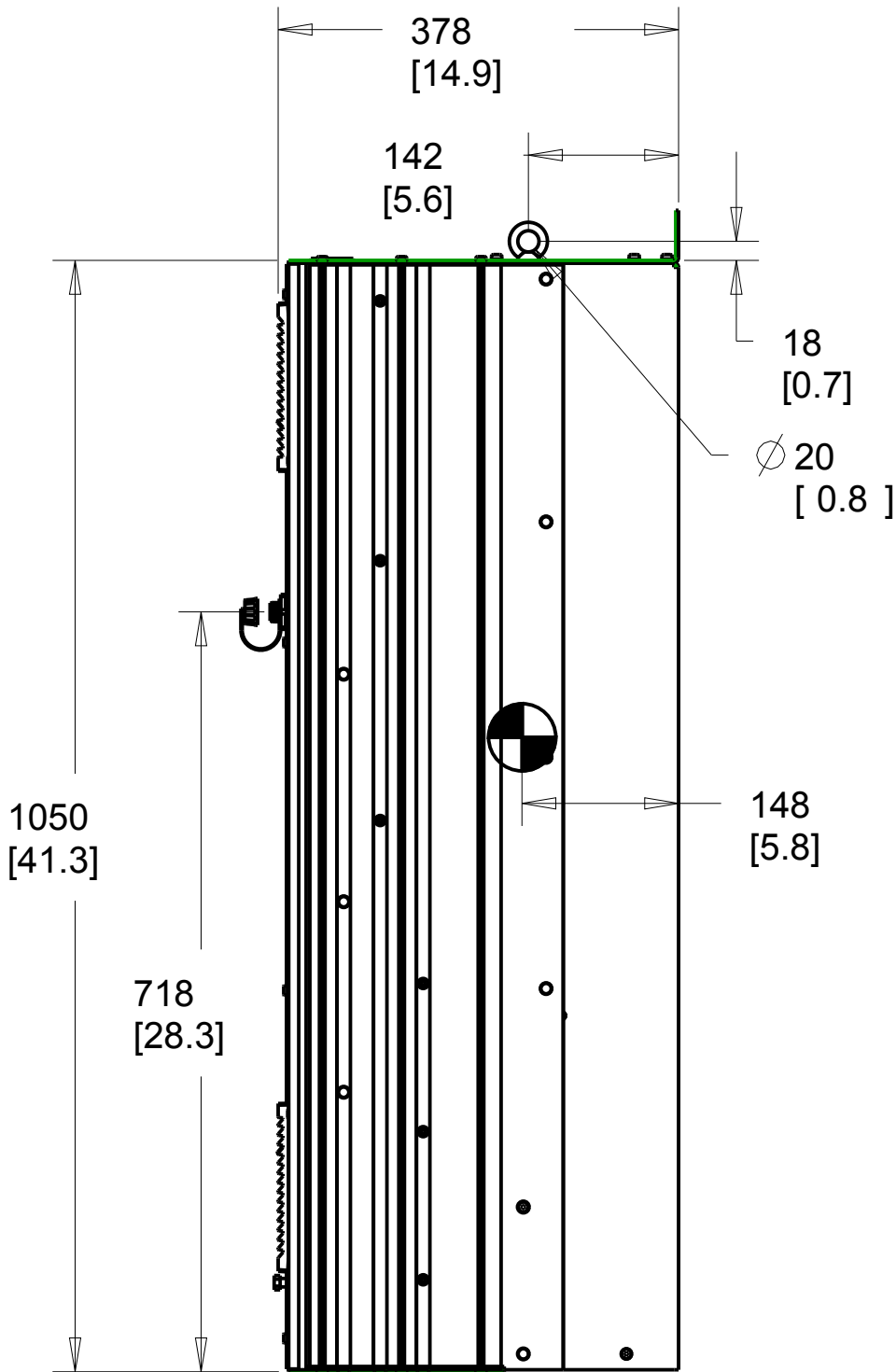
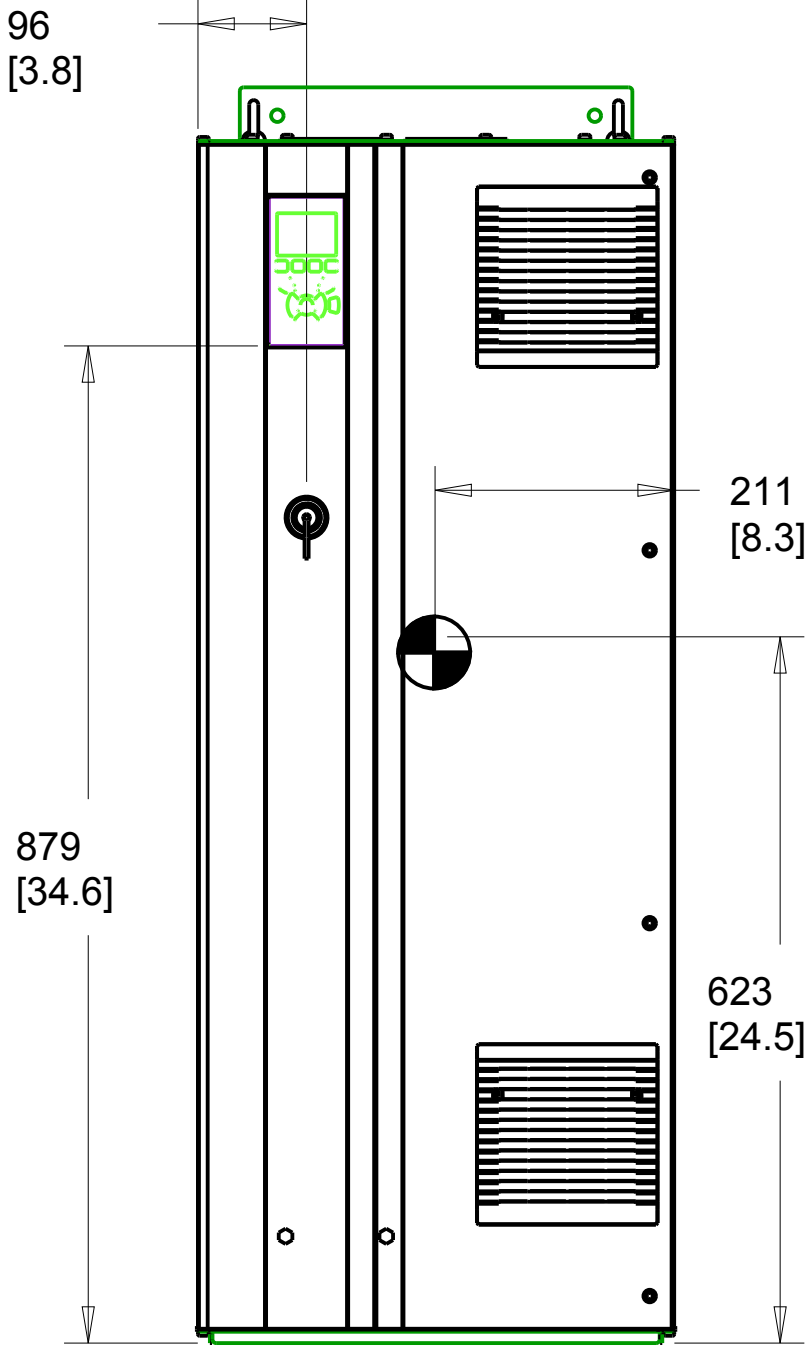


- NOTICE -

THIS DOCUMENT CONTAINS PROPRIETARY INFORMATION OF DANFOSS DRIVES. IT IS LOANED BY DANFOSS DRIVES SUBJECT TO THE CONDITIONS THAT IT AND THE INFORMATION EMBODIED THEREIN SHALL BE USED ONLY FOR RECORD AND REFERENCE PURPOSES, SHALL NOT BE USED OR CAUSED TO BE USED IN ANY WAY PREJUDICIAL TO THE INTERESTS OF DANFOSS DRIVES, SHALL NOT BE REPRODUCED OR COPIED IN WHOLE OR IN PART OR DISCLOSED TO ANYONE WITHOUT THE DIRECT WRITTEN PERMISSION OF DANFOSS DRIVES, AND SHALL BE RETURNED UPON REQUEST.

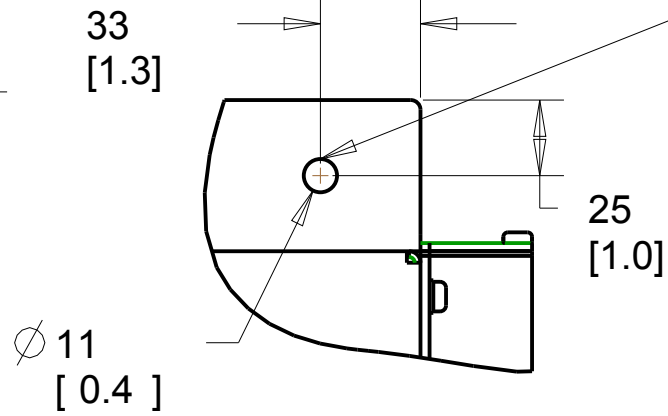
REVISION HISTORY

REV	ECN NUMBER	ENTRY BY	DATE
001	INITIAL RELEASE	PK	01/25/12

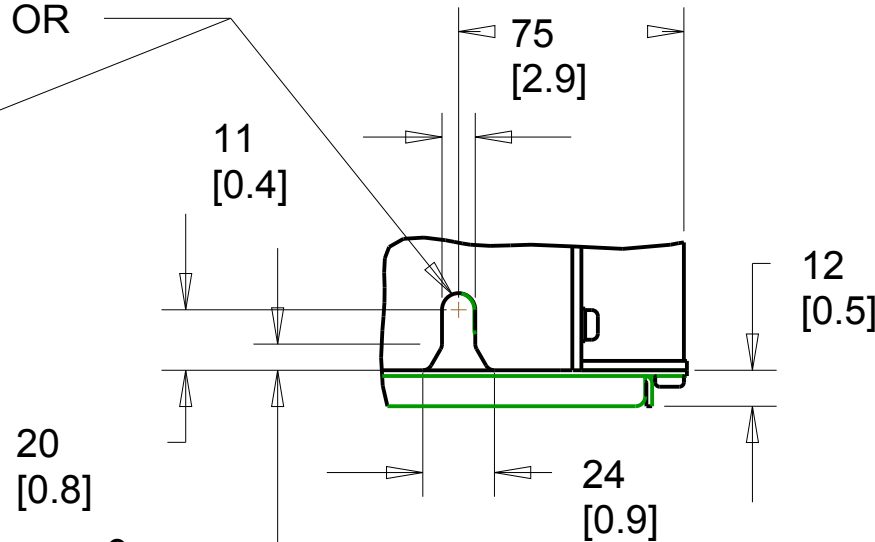


DETAIL A

USE M10 MTG BOLT OR
3/8" MTG BOLT



DETAIL B



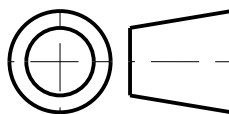
1. MAX AIRFLOW (BACKCHANNEL) - 14 M³ / MIN (500 CFM)
2. MAX AIRFLOW (CABINET) - 3.4 M³ / MIN (120 CFM)
3. MAX WEIGHT = 125 KG (275 LBS)
4. CENTER OF GRAVITY:
APPROXIMATE LOCATION ONLY, LOCATION MAY VARY BASED ON POWER RATING AND OPTIONS ORDERED.

UNLESS OTHERWISE SPECIFIED
INTERPRET DIM AND TOL. PER
ASME Y14.5M-1994

.X± 0.4 .XX± 0.2 ∠ ± 0.5

DIM. ARE IN MILLIMETERS
WEIGHTS ARE IN KILOGRAMS

THIRD ANGLE PROJECTION



PROPERTIES

MATERIAL	N/A	
FINISH	N/A	
THICKNESS	N/A	
ST.WEIGHT	125	
APPROVALS	INITIALS	DATE
DRAWN	CCN	06/16/11
CHECKED		
ENGR		

Danfoss

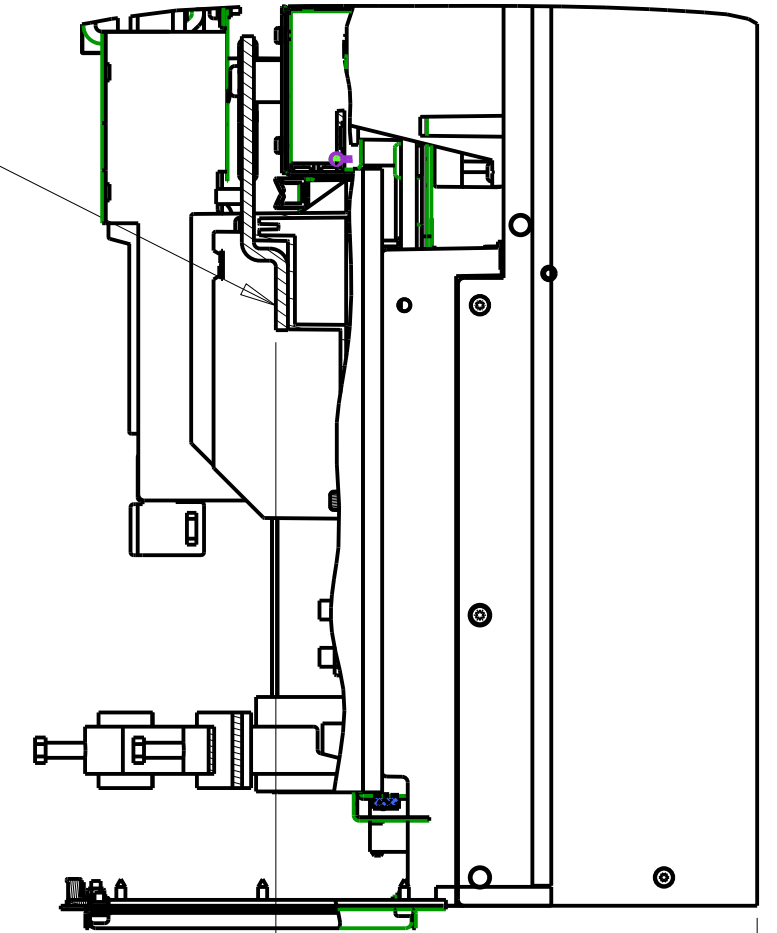
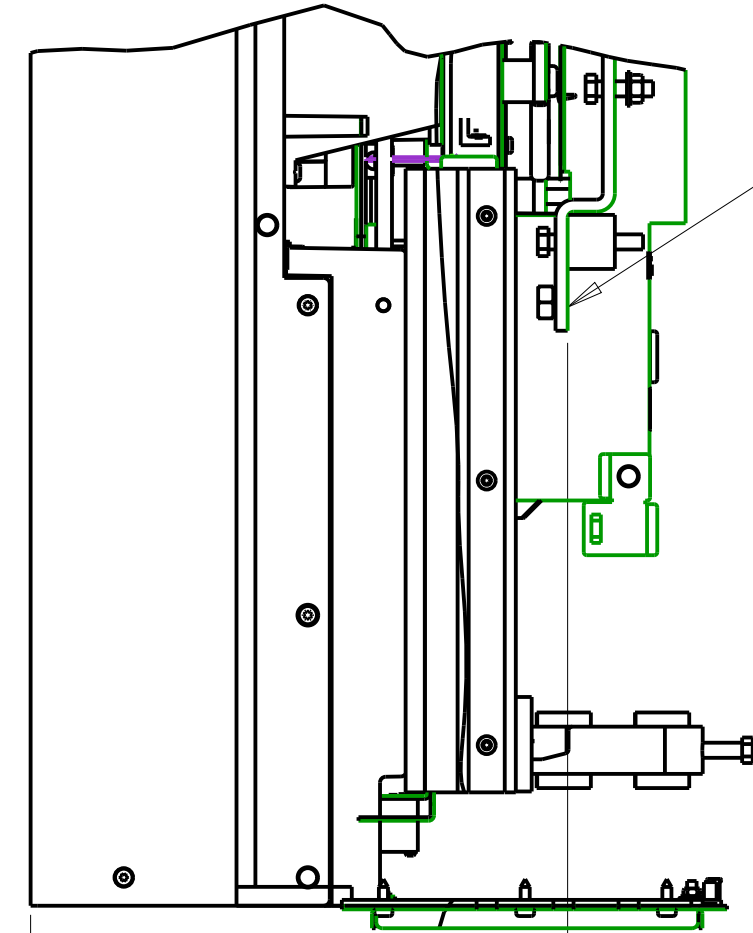
4401 N. BELL SCHOOL RD. LOVES PARK, ILLINOIS 61111 USA
(815) 639-8600 FAX (815) 639-8000

INSTALLATION DRAWING, D2H, IP21/54

SIZE	C	MODEL		REV	001
SCALE	0.150	DRAWING NO.	177R0375	SHEET	1 OF 3

SECTION A-A MAINS TERMINALS

SECTION B-B MOTOR TERMINALS



MAINS TERMINAL

MOTOR TERMINAL

331
[13.0]

4X M10X20 STUD
WITH NUT

GROUND 168
[6.6]

GROUND 143
[5.6]

211
[8.3]

GROUND 168
[6.6]

GROUND 143
[5.6]

0
[0.0]

42
[1.7]

378
[14.9]

68
[2.7]

184
[7.2]

299.8
[12]

126
[5.0]

245.8
[9.7]

354
[13.9]

255
[10.0]

0
[0.0]

MAINS TERMINAL

MOTOR TERMINAL

15
[0.6]

M10

19
[0.8]

38
[1.5]

15
[0.6]

M10

18
[0.7]

35.0
[1.4]

27
[1.0]

MAINS SIDE
CABLE ENTRY

145
[5.7]

196
[7.7]

369
[14.5]

185
[7.3]

MOTOR SIDE
CABLE ENTRY

BOTTOM VIEW

NOTES:

1. PLACE CABLES THROUGH MARKED AREAS
2. 185MM² (400 MCM) MAX WIRE SIZE

TITLE		
INSTALLATION DRAWING, D2H, IP21/54		
SIZE C	MODEL	REV 001
SCALE 0.250	DRAWING NO. 177R0375	SHEET 2 OF 3

4				3				2				1																																																																																							
D	THE TABLES BELOW MAY BE USED TO CONFIRM THE CORRECT FRAME SIZE AND DRAWING FOR A SPECIFIC DRIVE RATING (POWER AND VOLTAGE). THIS DRAWING IS FOR D2H FRAMES, THE TABLES BELOW IDENTIFY WHICH DRIVES ARE REPRESENTED BY THIS DRAWING.												D																																																																																						
C	<table><tr><th colspan="7">KW RATED DRIVES</th></tr><tr><td>KW HIGH OVERLOAD</td><td>132</td><td>160</td><td>200</td><td>250</td><td>315</td><td>315</td></tr><tr><td>KW NORMAL OVERLOAD</td><td>160</td><td>200</td><td>250</td><td>315</td><td>355</td><td>400</td></tr><tr><td>400V</td><td></td><td>D2H</td><td>D2H</td><td>D2H</td><td></td><td></td></tr><tr><td>500V</td><td></td><td></td><td>D2H</td><td>D2H</td><td>D2H</td><td></td></tr><tr><td>525V</td><td>D2H</td><td>D2H</td><td>D2H</td><td>D2H</td><td></td><td></td></tr><tr><td>690V</td><td></td><td>D2H</td><td>D2H</td><td>D2H</td><td></td><td>D2H</td></tr></table>							KW RATED DRIVES							KW HIGH OVERLOAD	132	160	200	250	315	315	KW NORMAL OVERLOAD	160	200	250	315	355	400	400V		D2H	D2H	D2H			500V			D2H	D2H	D2H		525V	D2H	D2H	D2H	D2H			690V		D2H	D2H	D2H		D2H	<table><tr><th>PLATFORM</th><th>VOLTAGE</th><th>MODEL/TYPECODE</th><th>FRAME(IP21/IP54)</th></tr><tr><td rowspan="7">HVAC</td><td rowspan="3">T4</td><td>FC-102N200T4</td><td rowspan="26">D2H</td></tr><tr><td>FC-102N250T4</td></tr><tr><td>FC-102N315T4</td></tr><tr><td rowspan="4">T7</td><td>FC-102N200T7</td></tr><tr><td>FC-102N250T7</td></tr><tr><td>FC-102N315T7</td></tr><tr><td>FC-102N400T7</td></tr><tr><td rowspan="7">AQUA</td><td rowspan="3">T4</td><td>FC-202N200T4</td></tr><tr><td>FC-202N250T4</td></tr><tr><td>FC-202N315T4</td></tr><tr><td rowspan="4">T7</td><td>FC-202N200T7</td></tr><tr><td>FC-202N250T7</td></tr><tr><td>FC-202N315T7</td></tr><tr><td>FC-202N400T7</td></tr><tr><td rowspan="8">AUTOMATION</td><td rowspan="3">T5</td><td>FC-302N160T5</td></tr><tr><td>FC-302N200T5</td></tr><tr><td>FC-302N250T5</td></tr><tr><td rowspan="5">T7</td><td>FC-302N160T7</td></tr><tr><td>FC-302N200T7</td></tr><tr><td>FC-302N250T7</td></tr><tr><td>FC-302N315T7</td></tr><tr><td></td></tr></table>							PLATFORM	VOLTAGE	MODEL/TYPECODE	FRAME(IP21/IP54)	HVAC	T4	FC-102N200T4	D2H	FC-102N250T4	FC-102N315T4	T7	FC-102N200T7	FC-102N250T7	FC-102N315T7	FC-102N400T7	AQUA	T4	FC-202N200T4	FC-202N250T4	FC-202N315T4	T7	FC-202N200T7	FC-202N250T7	FC-202N315T7	FC-202N400T7	AUTOMATION	T5	FC-302N160T5	FC-302N200T5	FC-302N250T5	T7	FC-302N160T7	FC-302N200T7	FC-302N250T7	FC-302N315T7	
	KW RATED DRIVES																																																																																																		
	KW HIGH OVERLOAD	132	160	200	250	315	315																																																																																												
	KW NORMAL OVERLOAD	160	200	250	315	355	400																																																																																												
	400V		D2H	D2H	D2H																																																																																														
	500V			D2H	D2H	D2H																																																																																													
	525V	D2H	D2H	D2H	D2H																																																																																														
690V		D2H	D2H	D2H		D2H																																																																																													
PLATFORM	VOLTAGE	MODEL/TYPECODE	FRAME(IP21/IP54)																																																																																																
HVAC	T4	FC-102N200T4	D2H																																																																																																
		FC-102N250T4																																																																																																	
		FC-102N315T4																																																																																																	
	T7	FC-102N200T7																																																																																																	
		FC-102N250T7																																																																																																	
		FC-102N315T7																																																																																																	
		FC-102N400T7																																																																																																	
AQUA	T4	FC-202N200T4																																																																																																	
		FC-202N250T4																																																																																																	
		FC-202N315T4																																																																																																	
	T7	FC-202N200T7																																																																																																	
		FC-202N250T7																																																																																																	
		FC-202N315T7																																																																																																	
		FC-202N400T7																																																																																																	
AUTOMATION	T5	FC-302N160T5																																																																																																	
		FC-302N200T5																																																																																																	
		FC-302N250T5																																																																																																	
	T7	FC-302N160T7																																																																																																	
		FC-302N200T7																																																																																																	
		FC-302N250T7																																																																																																	
		FC-302N315T7																																																																																																	
B													B																																																																																						
A													A																																																																																						
4				3				2				1																																																																																							
												<table><tr><th colspan="3">TITLE</th></tr><tr><td colspan="3">INSTALLATION DRAWING, D2H, IP21/54</td></tr><tr><td>SIZE</td><td>C</td><td>MODEL</td><td>REV</td></tr><tr><td>SCALE</td><td>0.150</td><td>DRAWING NO.</td><td>SHEET</td></tr><tr><td></td><td></td><td>177R0375</td><td>001</td></tr><tr><td></td><td></td><td></td><td>3 OF 3</td></tr></table>				TITLE			INSTALLATION DRAWING, D2H, IP21/54			SIZE	C	MODEL	REV	SCALE	0.150	DRAWING NO.	SHEET			177R0375	001				3 OF 3																																																														
TITLE																																																																																																			
INSTALLATION DRAWING, D2H, IP21/54																																																																																																			
SIZE	C	MODEL	REV																																																																																																
SCALE	0.150	DRAWING NO.	SHEET																																																																																																
		177R0375	001																																																																																																
			3 OF 3																																																																																																